

HAAS® BMT LIVE & STATIC TOOLING



HAAS® ST SERIES LATHES: ST-20Y THROUGH ST-35Y & DS-30Y

LYNDEX-NIKKEN LIVE TOOLING WILL ALSO FIT HAAS® ST-20 THROUGH ST-35 (WITH OPTIONAL BMT65 TURRET)



LYNDEX
NIKKEN
PRECISION FIRST

CAT2017-BMT65-LT-HAAS JULY 2017

Special Live Tool Inquiry Form

Fax: (847) 367-4815
E-mail: sales@lyndexnikken.com

Fill in the form below and e-mail it to sales@lyndexnikken.com, or visit www.lyndexnikken.com and complete the form online. Lyndex-Nikken engineers will help you to determine the best live tool for your application.

Company _____ Name _____
 Address _____
 City _____ State _____ Zip _____
 Phone _____ E-mail _____

Please specify design configuration:



Standard:
1) straight
2) 90° (reducer/speeder)



Offset:
1) straight
2) 90°



Saw Blade Holder:
1) straight
2) 90°



Multi Output:
1) straight
2) 90°



Offset Multi Output:
1) straight
2) 90°



Adjustable Y straight



Adjustable Angle



Fixed Angle

Please specify holding system and cutting tool specifications:

Holding System

Preferred type of holding system (ER, Shrink Fit, Shell Mill Arbor, etc.): _____

Application and Cutting Tool Specifications

Type of material: _____

Type and nature of application (milling, drilling, reaming, splitting, etc.): _____

Size of cutter (diameter): _____ Overall length of cutter: _____

Flute length: _____ Requested RPM: _____ Requested torque: _____

Coolant Requirements

External/Internal: _____ Requested pressure capabilities: _____

Number of nozzle ports: _____ Coolant pipe design or configuration specifications: _____



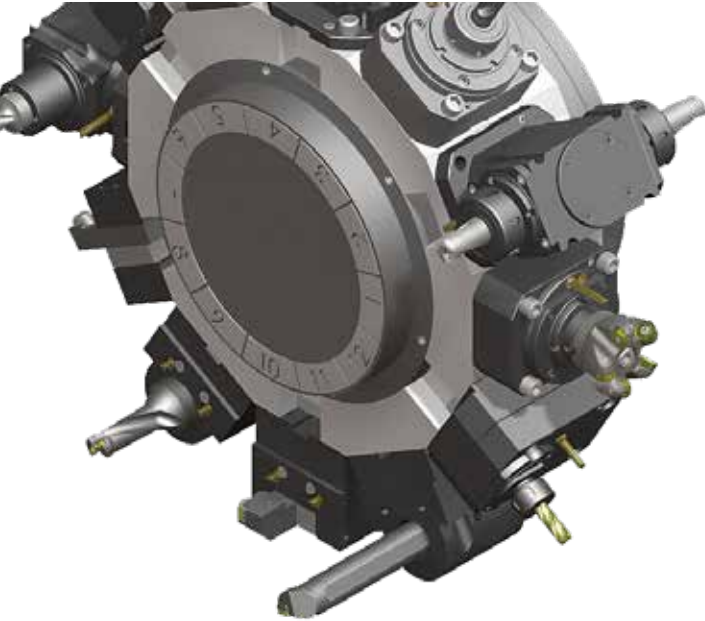
BMT LIVE & STATIC TOOLING

<i>Special Live Tool Inquiry Form</i>	2
<i>Table of Contents</i>	3
<i>Part Number Structure for Live and Static Tools</i>	4
<i>Features and Technology</i>	5
<i>SK High Performance Live Tool Series</i>	6
<i>ER vs. SK Gripping Force</i>	7
VDI Turret: ST-10Y, ST-15Y, ST-20Y, ST-30Y, DS-30Y, ST40 Series Live Tools	8-10
BMT65 Live Tools	10-12
BMT65 Static Tools	13-19
<i>ER Series Collets</i>	20
<i>ER Series Coolant Collets</i>	21
<i>ER Tap Collets - Standard and Coolant</i>	22
<i>SK Series Collets</i>	23
<i>Wrench Instructions, Warranty and Repair Services</i>	24
<i>TQW Torque Wrenches</i>	25

Specials

Custom-made live tools can be engineered for your specific application. Please direct your request to our office (see special live tool inquiry form). Our engineering staff is ready to assist you with your specific tooling needs.

Turn Your Bolt Mounted Turret Lathe into a Precision Profit Center



Lyndex-Nikken live tooling offers the latest technology you can expect for turning operations. Our live tools have features and benefits unmatched by the competition. Gears, bearings, seals, every part is built to provide the highest accuracy, rigidity and stability.

With more than 35 years of tooling engineering and manufacturing experience, Lyndex-Nikken live tooling will maximize the capabilities of your machine, and keep you far ahead of the global competition. We understand that exceptional quality is key to your business. Let the manufacturers who share your philosophy in producing live tools join you in doing what you do best - machining the highest quality parts.

Enhanced with Lyndex-Nikken live tooling, your machine will allow you to reduce cycle times, eliminate extra operations and achieve maximum efficiency.

Bolt Mount Turret (BMT)

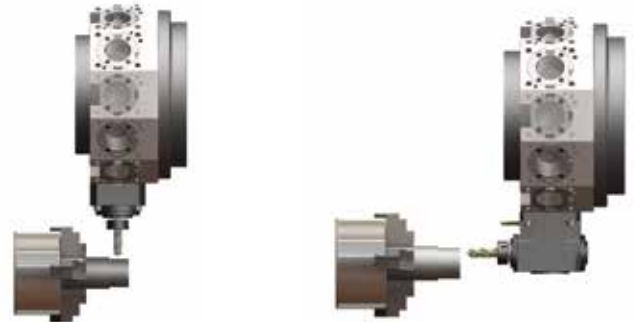
Parts inventory, maintenance and repair, and rebuild services are available through Lyndex-Nikken

Commonly Referenced:

- Radial Live Tools
- Straight Live Tools
- X-Axis Live Tools

Commonly Referenced:

- Axial Live Tools
- 90 or Angle Live Tools
- Z-Axis Live Tools



Part numbering structure for Live & Static Tools

1	2	3	4	5	6	7	8	9	10	11	12	13	14	15	16	17
BMT		65				•	E	R	3	2	Z	•	MS		•	ICE
Machine Make		Machine Model		•		Tool Nose/Output		Axis		•		Style		•		Coolant
BMT	Bolt Mounted Turret	65	65mm Driven Tool		ER32		ER32	X	MS		Main Sub Opposite		ICE			
				SK20		SK20	Z	MSD		Main & Sub Spindle, 4 Output						
HA40	VDI Turret			BG10		BORING 1"				MST		Main & Sub Spindle, 6 Output				
				BG12		BORING 1.1/4"				MSQ		Main & Sub Spindle, 8 Output				
				BG15		BORING 1.1/2"										
				BG20		BORING 2"										
				ID75		FACE TURNING 3/4"										
				ID10		FACE TURNING 1"										
				OD75		OD TURNING 3/4"										
				OD10		OD TURNING 1"										

Features and Technology



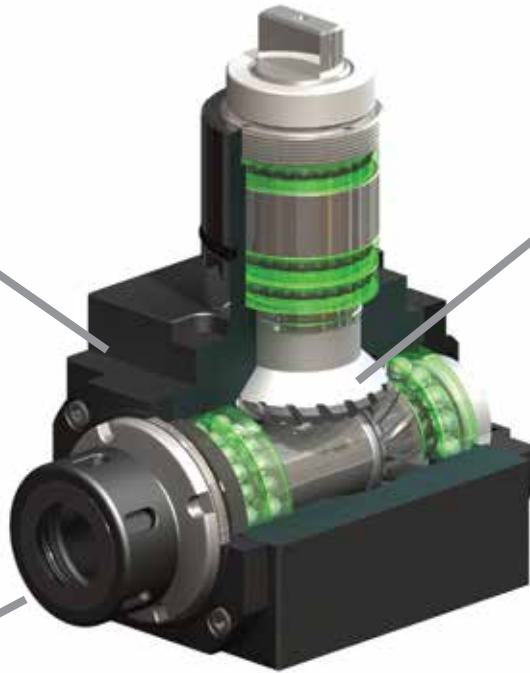
Protective Seals

- **Labyrinth Seals** - provide a high-pressure multi-barrier construction that prevents contaminants and coolant from entering the main chamber.



Eccentric Bearing Nut

- **Ground Eccentric Nut** - allows for fine accuracy and strong tool shank gripping capacity by preventing collet twisting or rocking.
- **Runout** - guarantee of under 5-micron repeatability at collet nose.



Gears for Stability

- **Gear Pairing** - hand-matched for each pair to minimize backlash.
- **Gear Design** - custom ground spiral bevel gear tooth design maximizes drive torque output and reduces tooth root stress allowing for more tool longevity.
- **Gear Equilibrium** - placement of bearings balance torque stress evenly through input/output shafts.

Tool Design and Engineering

- **Tool Body** - manufactured from the highest tensile and compression Nickel Chrome Molybdenum alloys.
- **Drive Shafts** - all features are ground on both the input and output Chrome Molybdenum drive shafts to assure proper torque transmission and precision concentricity.
- **Bearing Quality** - only the highest precision ABEC 7 angular contact bearings are used for smooth and high speed rotation.
- **Quality Control** - all live tools go through a vigorous 60-point final inspection to satisfy the highest expectations of live tool performance.

ARE YOU GETTING THE MOST OUT OF YOUR HAAS® CNC TURNING CENTER?



See the **POWER** of SK on YouTube @LyndexNikkenMedia or scan the QR codes:



SK performance on the Haas® ST20 lathe



SK performance on the Haas® VF2 mill

Turn to pages 8-11 for the full specs on our SK High Performance Live Tools for Haas®!

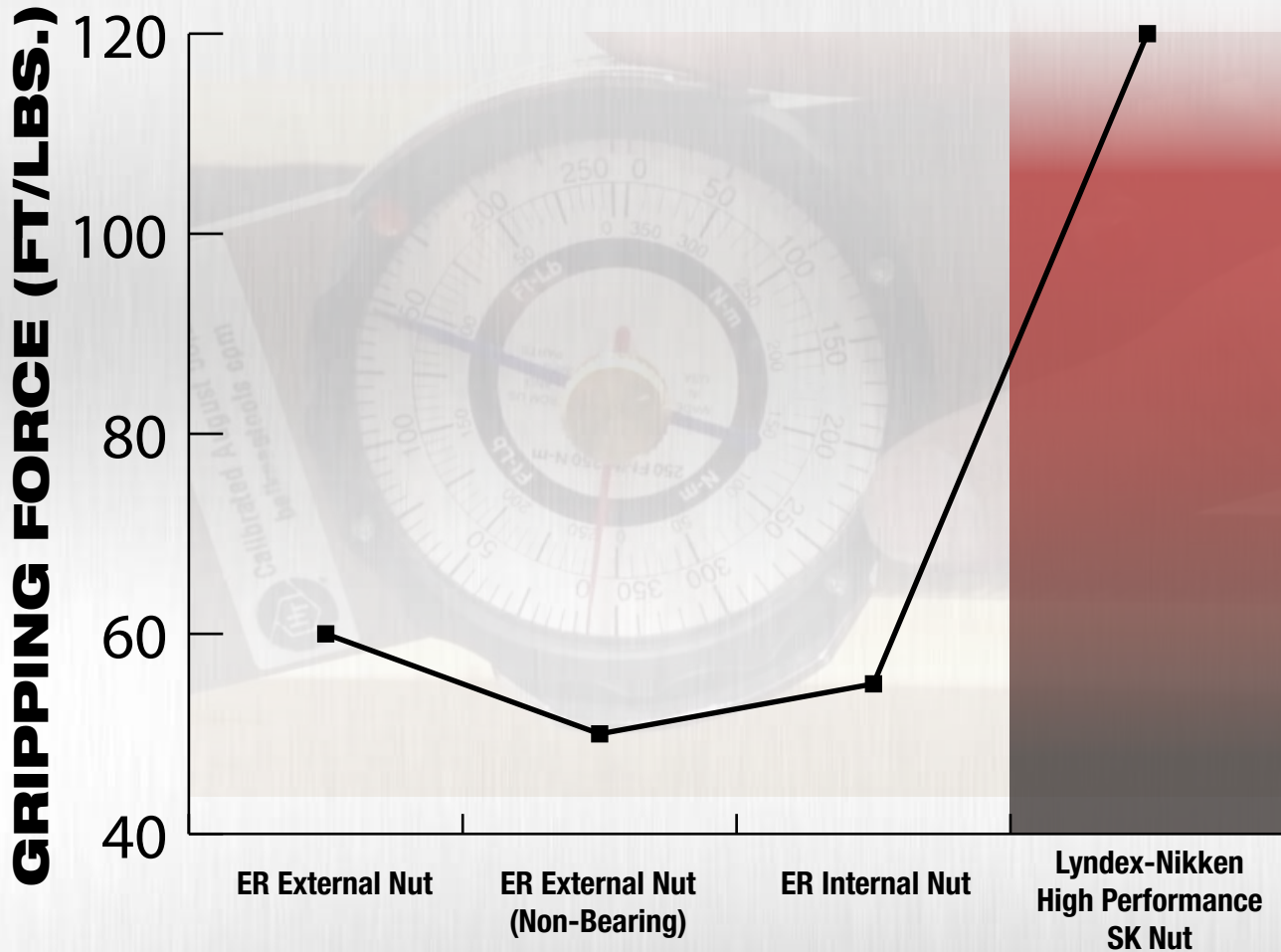
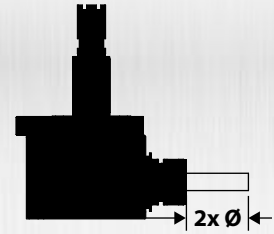
ALL INTERNAL COOLANT TOOLS CAN RUN DRY CONTINUOUSLY!



Benefits of Higher Gripping Force

- Machine with higher chip load and reduce cycle time
- Reduction in end mill pulling reduces scrapping parts
- Eliminate over tightening that can lead to collet damage and excessive run-out
- Better overall cutting condition

Tightening Torque: 70 ft.-lbs. • Collet Size: ER 32 • Pin: 1/2" Solid Carbide



Test	ER External Nut	ER External Nut (Non-Bearing)	ER Internal Nut	Lyndex-Nikken HI-Performance SK Nut
1	75 ft.lbs.	60 ft.lbs.	60 ft.lbs.	115 ft.lbs.
2	60 ft.lbs.	60 ft.lbs.	55 ft.lbs.	120 ft.lbs.
3	60 ft.lbs.	65 ft.lbs.	65 ft.lbs.	110 ft.lbs.
4	70 ft.lbs.	50 ft.lbs.	70 ft.lbs.	115 ft.lbs.
5	75 ft.lbs.	55 ft.lbs.	75 ft.lbs.	115 ft.lbs.



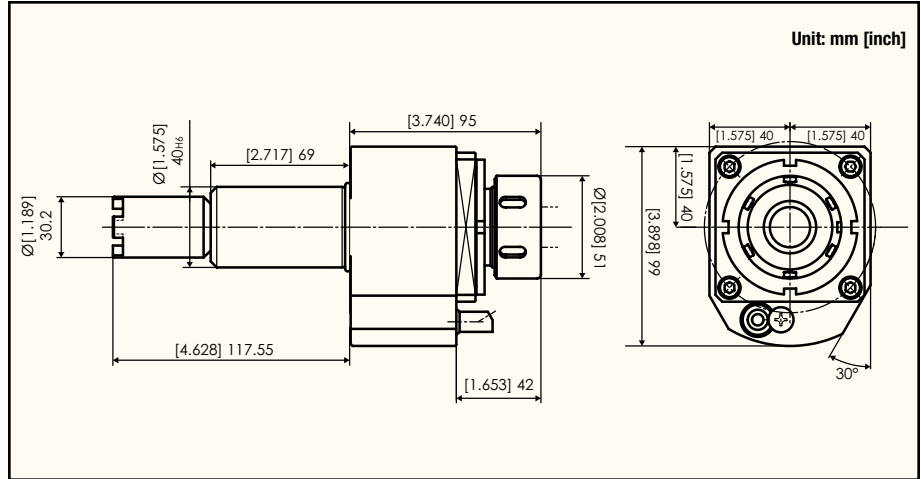
Looking for SK Series Collets? Turn to page 23.

Face Drill/Milling Unit

Part #: HA40-ER32Z-4500RPM (External Coolant)

Clockwise Input

Clockwise Output



External or Internal Coolant	Radial/Axial	Max. RPM	Gear Ratio	Max. Torque Output	Max. Pressure	Collet Size	Replacement Nut	Setting Fixture	Spanner Wrench for Nut
External	Axial	4500	1:1	17.3 ft-lbs (24N-m)	1000 PSI	ER32 (1/8" to 25/32")	HA105-00100	HA116-00800	FK-8

Please refer to pages 20-22 for ER Series Collets and ER Tap Collets details.

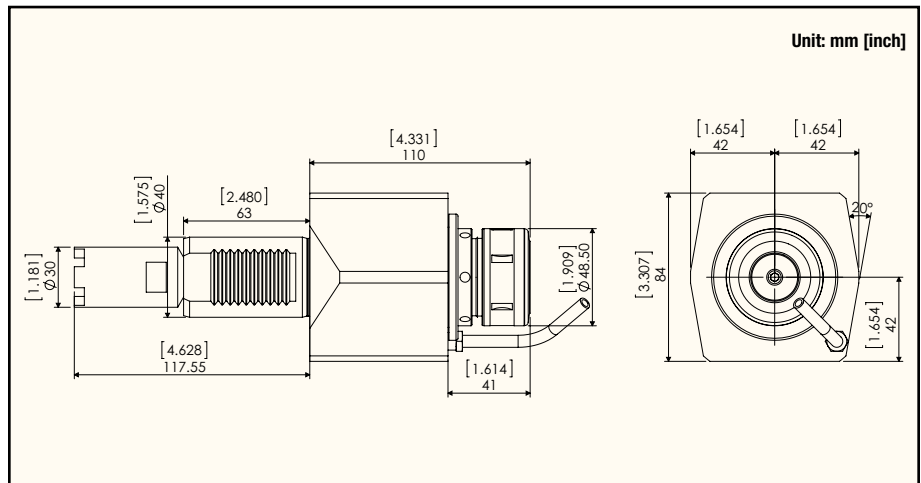
SK20 Performance Series

Part #: HA40M-SK20Z-ICE (Internal Coolant)

2X the
GRIPPING POWER
of ER32!
(see page 7)

Clockwise Input

Clockwise Output



External or Internal Coolant	Radial/Axial	Max. RPM	Gear Ratio	Max. Torque Output	Max. Pressure	Collet Size	Replacement Nut	Spanner Wrench for Spindle	Spanner Wrench for Nut
Internal	Axial	6500	1:1	59 ft-lbs (80N-m)	1000 PSI	SK20 (1/8" to 3/4")	SKN-20B / SKN-20BJ	WRENCH-MIM-107446	FK-8

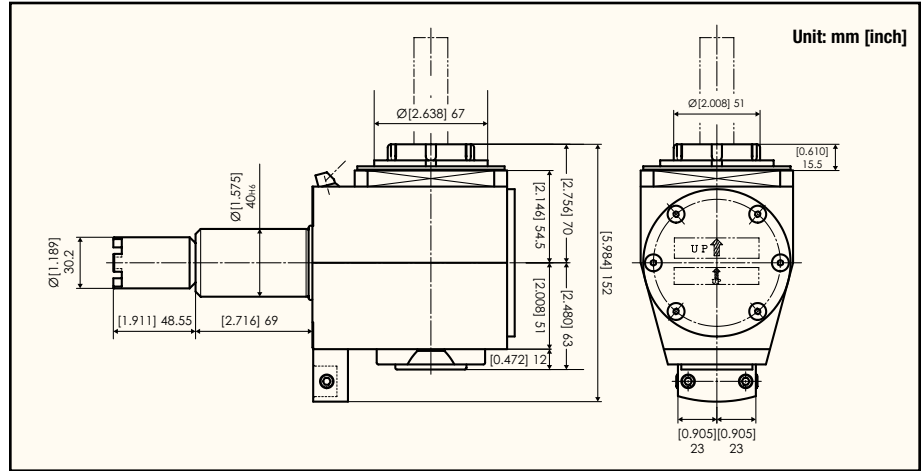
Note: Max Coolant Pressure 1000 PSI. Must use a minimum of a 20 micron coolant filter to prevent damage to the unit. Please refer to page 23 for SK Series Collets details.

OD Drill/Milling Unit

Part #: HA40-ER32X-4500RPM (External Coolant)

Clockwise Input

Clockwise Output



External or Internal Coolant	Radial/Axial	Max. RPM	Gear Ratio	Max. Torque Output	Max. Pressure	Collet Size	Replacement Nut	Setting Fixture	Spanner Wrench for Nut
External	Radial	4500	1:1	17.3 ft-lbs (24N-m)	1000 PSI	ER32 (1/8" to 25/32")	HA105-00100	HA116-00800	FK-8

Please refer to pages 20-22 for ER Series Collets and ER Tap Collets details.

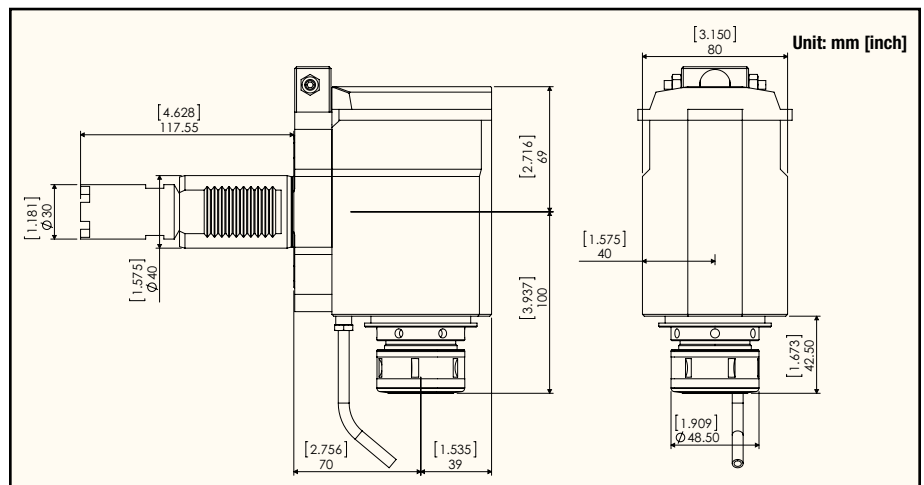
SK20 Performance Series

Part #: HA40M-SK20X-ICE (Internal Coolant)

2X the GRIPPING POWER of ER32!
(see page 7)

Clockwise Input

Clockwise Output



External or Internal Coolant	Radial/Axial	Max. RPM	Gear Ratio	Max. Torque Output	Max. Pressure	Collet Size	Replacement Nut	Spanner Wrench for Spindle	Spanner Wrench for Nut
Internal	Radial	6500	1:1	36.9 ft-lbs (50N-m)	1000 PSI	SK20 (1/8" to 3/4")	SKN-20B / SKN-20BJ	WRENCH-MIM-107446	FK-8

Note: Max Coolant Pressure 1000 PSI. Must use a minimum of a 20 micron coolant filter to prevent damage to the unit. Please refer to page 23 for SK Series Collets details.

OD Drill/Milling Unit

Part #: **BMT65-ER32X** (External Coolant) / **BMT65-ER32X-ICE** (Internal Coolant)

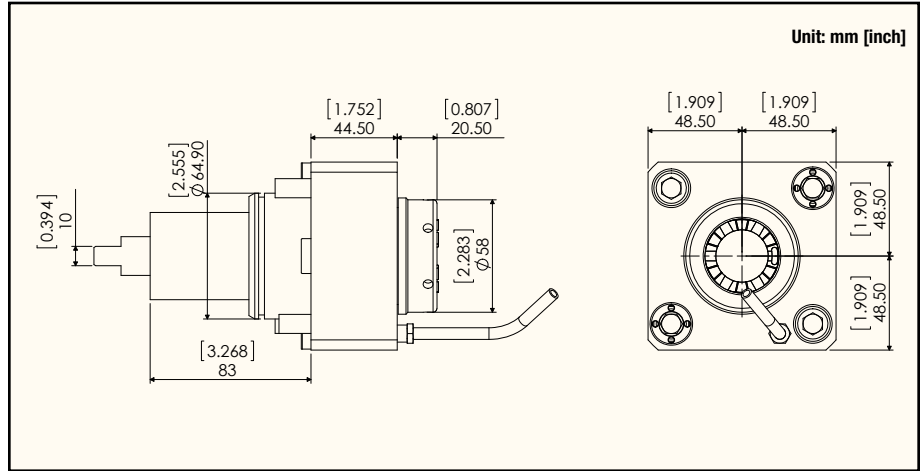
Clockwise Input



Clockwise Output



ICE "ICE" ALLOWS FOR INTERNAL COOLANT TYPE TO BE RUN DRY **CONTINUOUSLY!**



External/Internal Coolant	Radial/Axial	Max RPM	Gear Ratio	Max Torque Output	Max Pressure	Collet Size	Replacement Nut	Spanner for Spindle	Spanner for Nut
External	Radial	6,500	1:1	70Nm	1000psi (7MPa)	ER32	NUT-ER32I		
Internal					1000psi (7MPa)		NUT-ER32I-C		

Note: Max Coolant Pressure 1000 PSI. Must use a minimum of a 20 micron coolant filter to prevent damage to the unit. Please refer to pages 20-22 for ER Series Collets and ER Tap Collets details.

OD Drill/Milling Unit

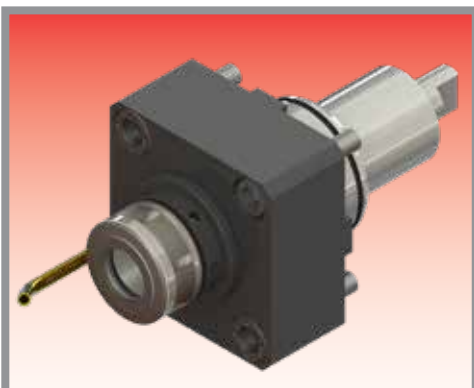
Part #: **BMT65-SK20X-ICE** (External/Internal Coolant)

2X the
GRIPPING POWER
of ER32!
(see page 21)

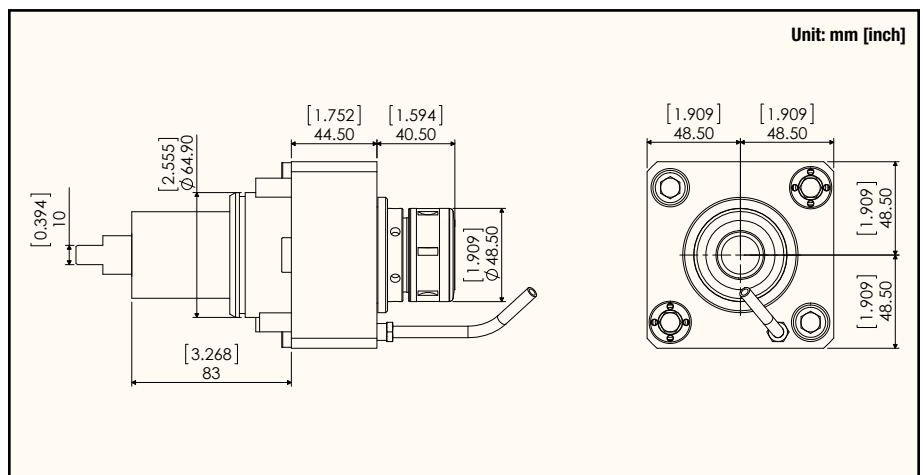
Clockwise Input



Clockwise Output



ICE "ICE" ALLOWS FOR INTERNAL COOLANT TYPE TO BE RUN DRY **CONTINUOUSLY!**

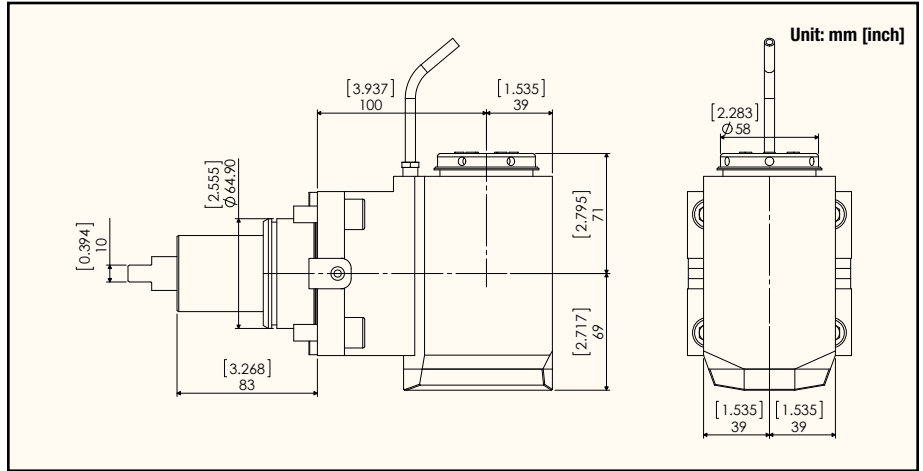
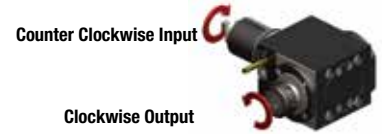


External/Internal Coolant	Radial/Axial	Max RPM	Gear Ratio	Max Torque Output	Max Pressure	Collet Size	Replacement Nut	Spanner for Spindle	Spanner for Nut
External/Internal	Radial	6,500	1:1	70Nm	1000psi (7MPa)	SK20	SKN-20B/ SKN-20BJ		

Note: Max Coolant Pressure 1000 PSI. Must use a minimum of a 20 micron coolant filter to prevent damage to the unit. Please refer to page 23 for SK Series Collets details.

Face Drill/Milling Unit

Part #: **BMT65-ER32Z** (External Coolant) / **BMT65-ER32Z-ICE** (Internal Coolant)



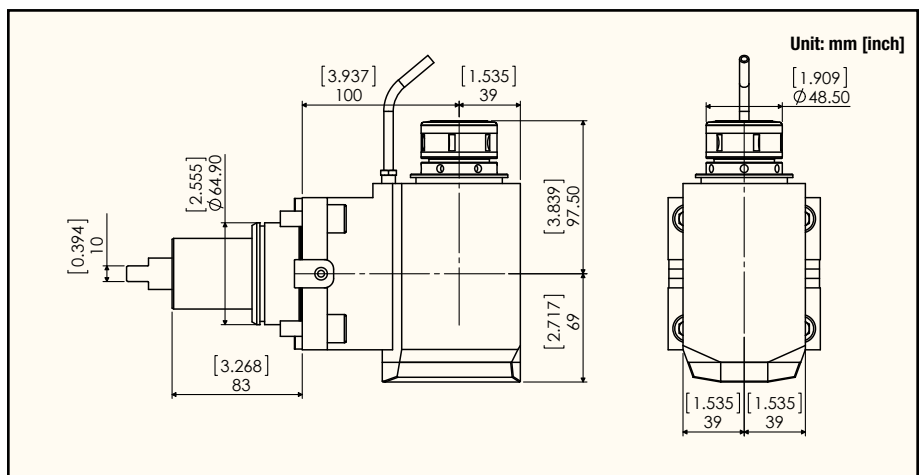
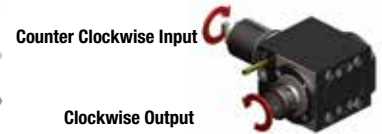
External/Internal Coolant	Radial/Axial	Max RPM	Gear Ratio	Max Torque Output	Max Pressure	Center Height	Collet Size	Replacement Nut	Spanner for Spindle	Spanner for Nut
External	Axial	6,500	1:1	70Nm	1000psi (7MPa)	100mm	ER32	NUT-ER32I		
Internal					1000psi (7MPa)			NUT-ER32I-C		

Note: Max Coolant Pressure 1000 PSI. Must use a minimum of a 20 micron coolant filter to prevent damage to the unit. Please refer to pages 20-22 for ER Series Collets and ER Tap Collets details.

Face Drill/Milling Unit

Part #: **BMT65-SK20Z-ICE** (External/Internal Coolant)

2X the
GRIPPING POWER
of ER32!
(see page 21)

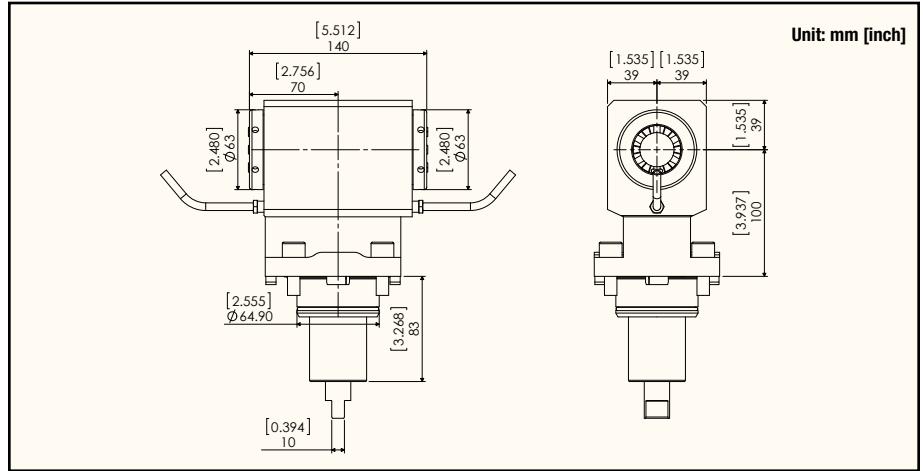
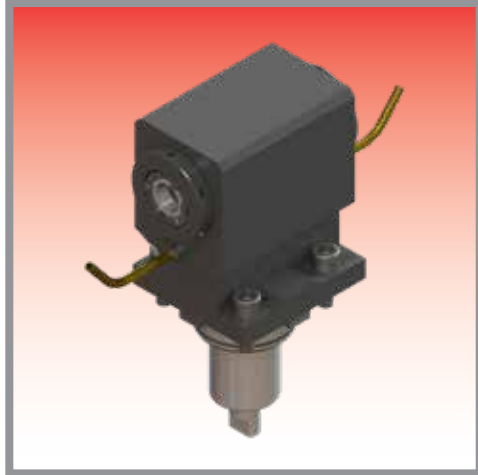




External/Internal Coolant	Radial/Axial	Max RPM	Gear Ratio	Max Torque Output	Max Pressure	Center Height	Collet Size	Replacement Nut	Spanner for Spindle	Spanner for Nut
External/Internal	Axial	6,500	1:1	70Nm	1000psi (7MPa)	100mm	SK20	SKN-20B/ SKN-20BJ		

Note: Max Coolant Pressure 1000 PSI. Must use a minimum of a 20 micron coolant filter to prevent damage to the unit. Please refer to page 23 for SK Series Collets details.

Face Drill/Milling Unit (Main & Sub)

Part #: **BMT65-ER32Z-MS** (External Coolant)

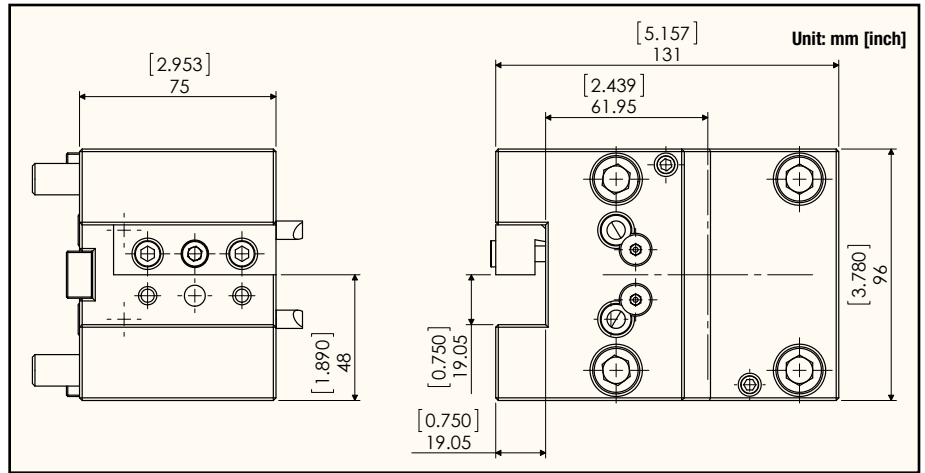
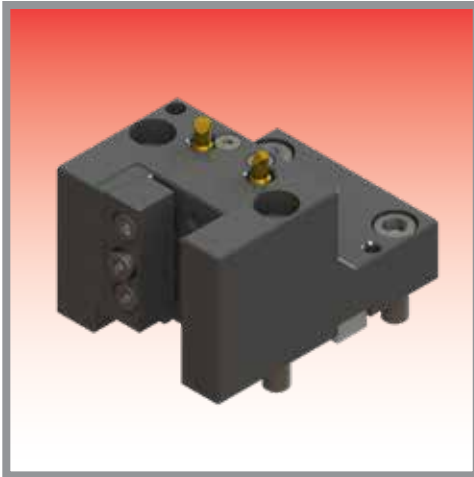


External/Internal Coolant	Radial/Axial	Max RPM	Gear Ratio	Max Torque Output	Center Height	Collet Size	Replacement Nut	Spanner for Spindle	Spanner for Nut
External	Axial	6,500	1:1	70Nm	100mm	ER32	NUT-ER32I	 WRENCH-MIM-107642	 WRENCH-ER32I

Please refer to pages 20-22 for ER Series Collets and ER Tap Collets details.

3/4" OD Turning Tool

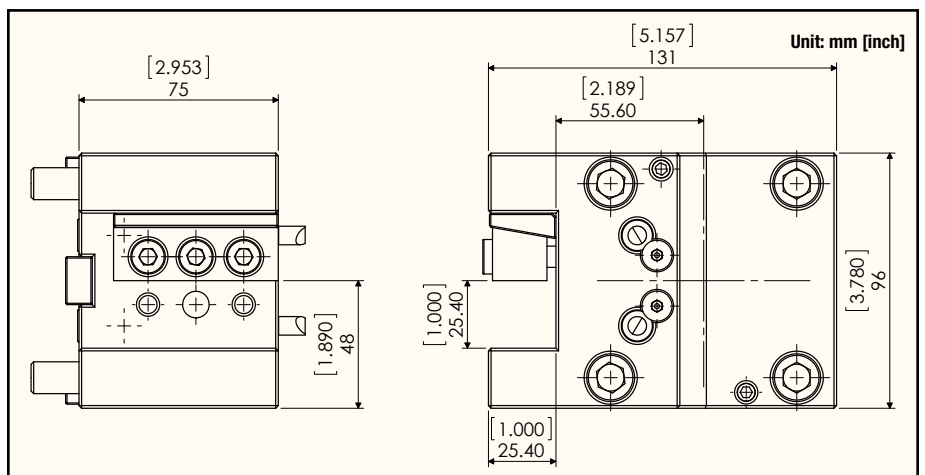
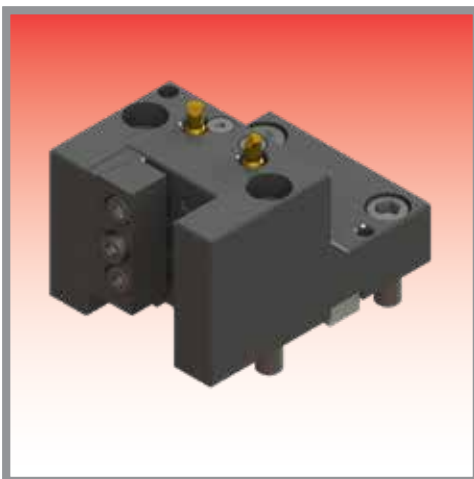
Part #: BMT65-OD75X



Description	Interface	Output Size
BMT65 3/4" OD Turning Tool	BMT65	3/4"

1" OD Turning Tool

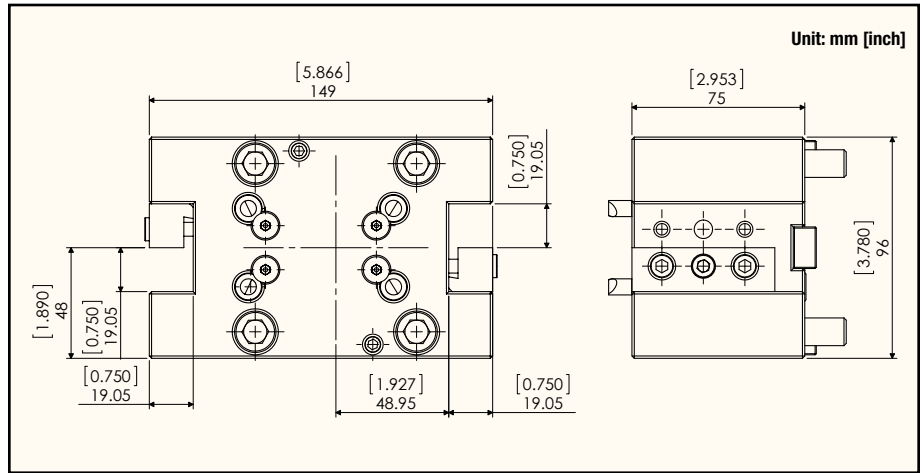
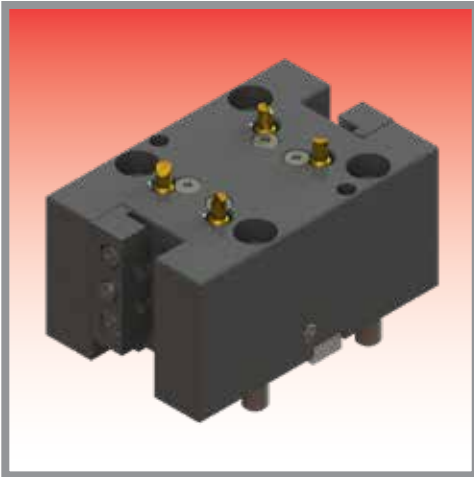
Part #: BMT65-OD10X



Description	Interface	Output Size
BMT65 1" OD Turning Tool	BMT65	1"

3/4" OD Turning Tool 2 Output (Main & Sub)

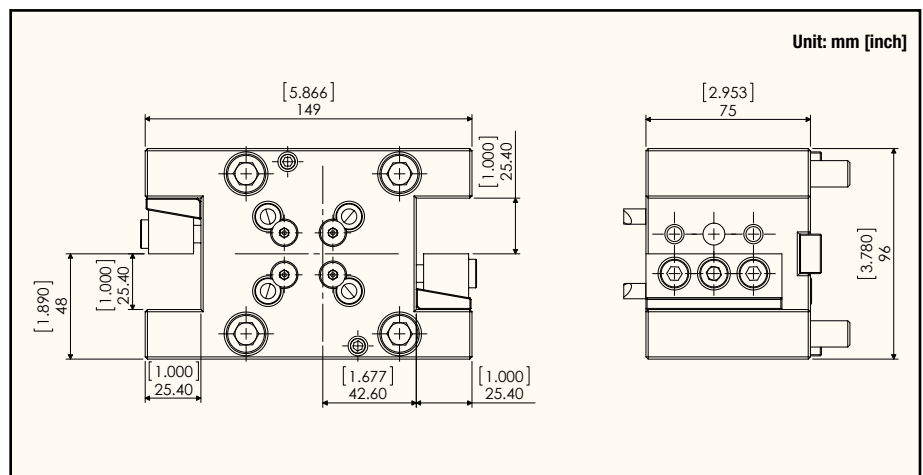
Part #: BMT65-OD75X-MS



Description	Interface	Output Size
BMT65 3/4" OD Turning Tool 2 Output (Main & Sub)	BMT65	3/4"

1" OD Turning Tool 2 Output (Main & Sub)

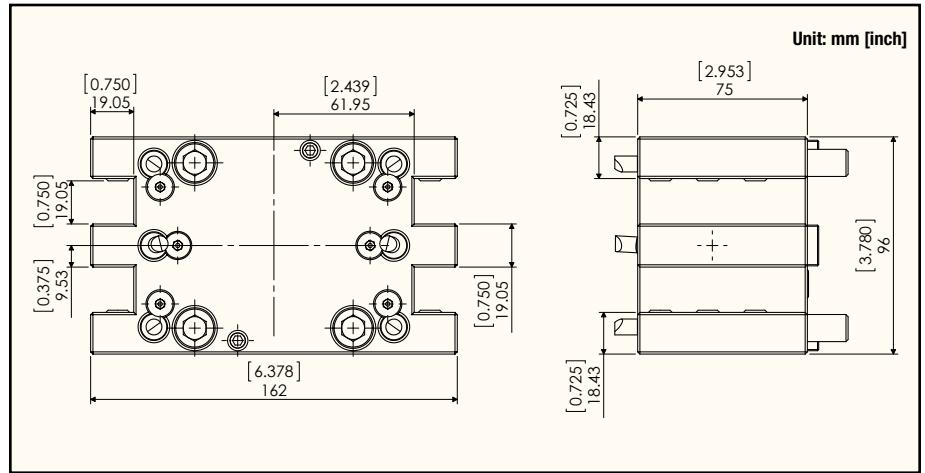
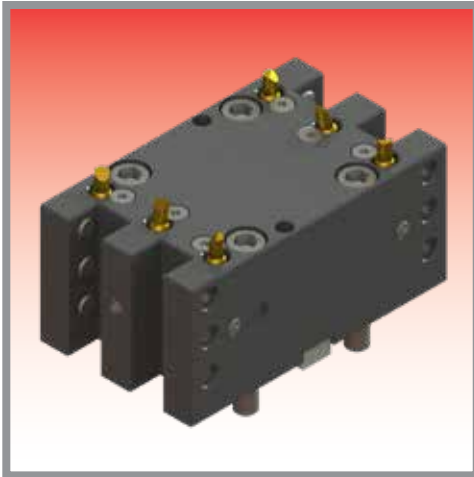
Part #: BMT65-OD10X-MS



Description	Interface	Output Size
BMT65 1" OD Turning Tool 2 Output (Main & Sub)	BMT65	1"

3/4" OD Turning Tool 4 Output (2 Main & 2 Sub)

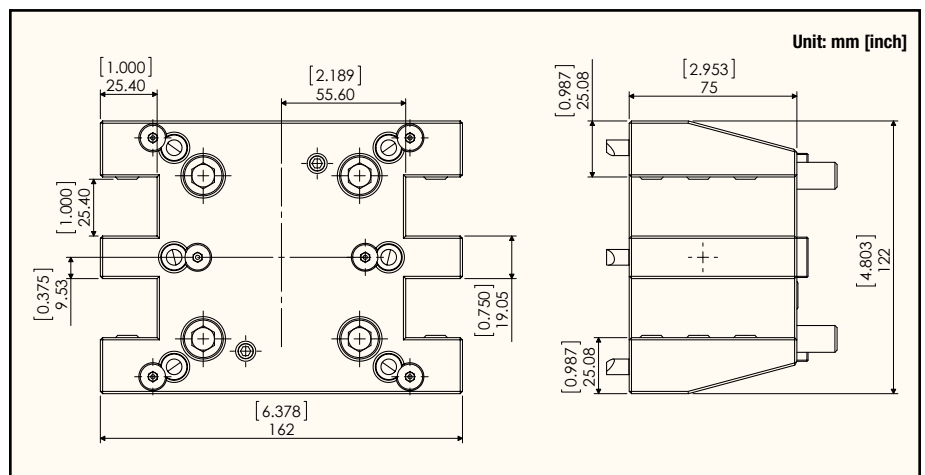
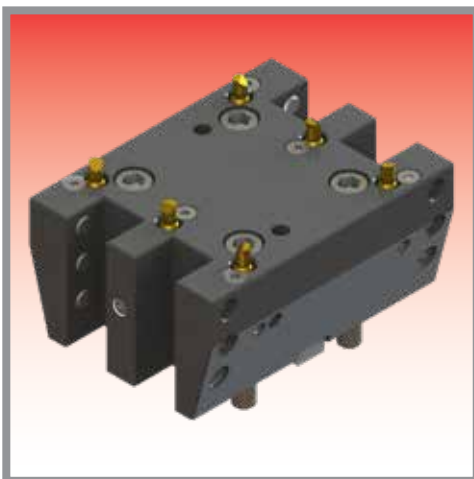
Part #: BMT65-OD75X-MSD



Description	Interface	Output Size
BMT65 3/4" OD Turning Tool 4 Output (2 Main & 2 Sub)	BMT65	3/4"

1" OD Turning Tool 4 Output (2 Main & 2 Sub)

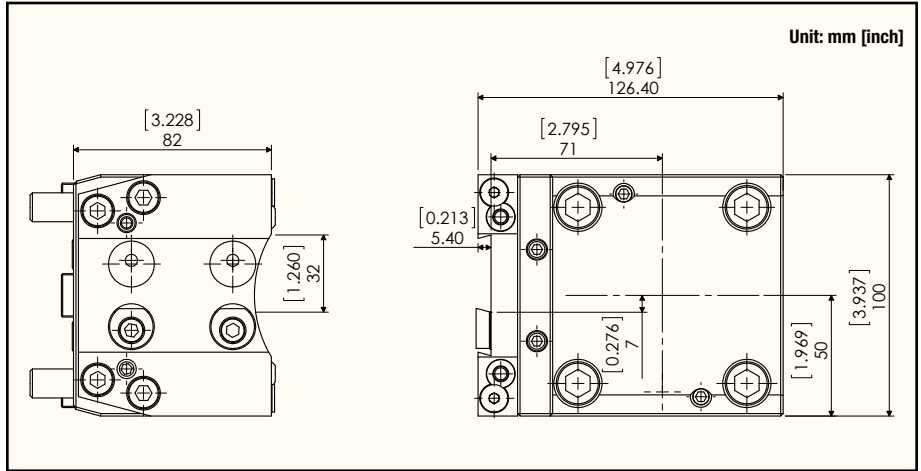
Part #: BMT65-OD10X-MSD



Description	Interface	Output Size
BMT65 1" OD Turning Tool 4 Output (2 Main & 2 Sub)	BMT65	1"

32mm OD Cut-Off Holder

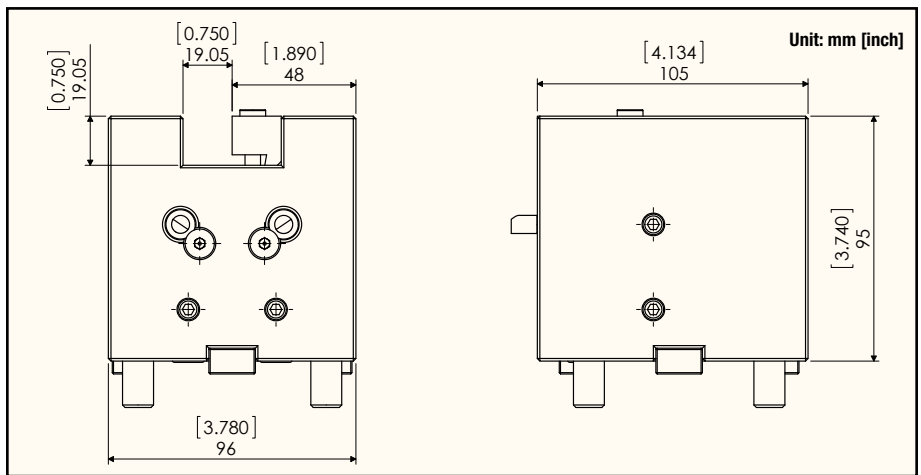
Part #: BMT65-C032MMX



Description	Interface	Output Size
BMT65 32mm OD Cut-Off Holder	BMT65	32mm

3/4" ID Cutting Tool

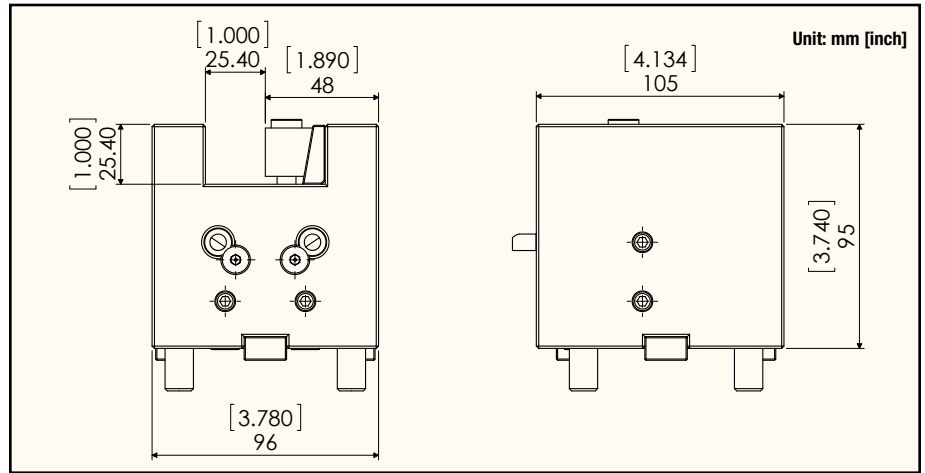
Part #: BMT65-ID75Z



Description	Interface	Output Size
BMT65 3/4" ID Cutting Tool	BMT65	3/4"

1" ID Cutting Tool

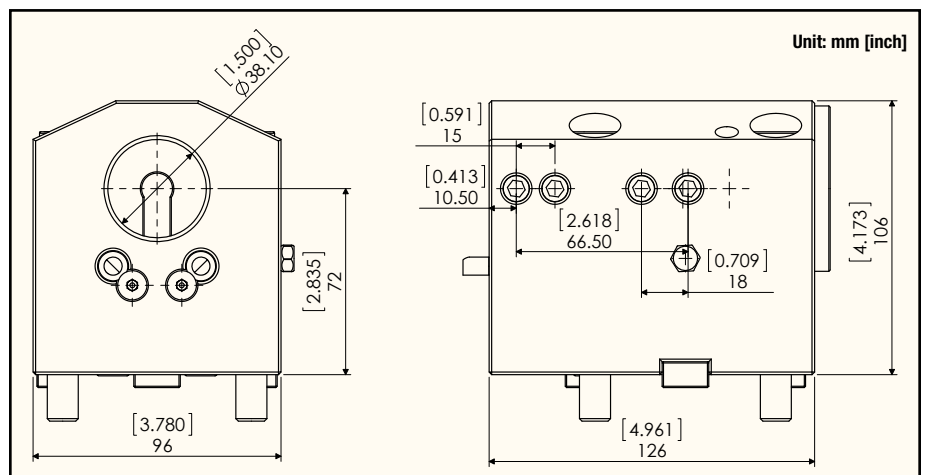
Part #: BMT65-ID10Z



Description	Interface	Output Size
BMT65 1" ID Cutting Tool	BMT65	1"

1.5" Boring Bar Holder

Part #: BMT65-BG15Z-C (Internal Coolant)

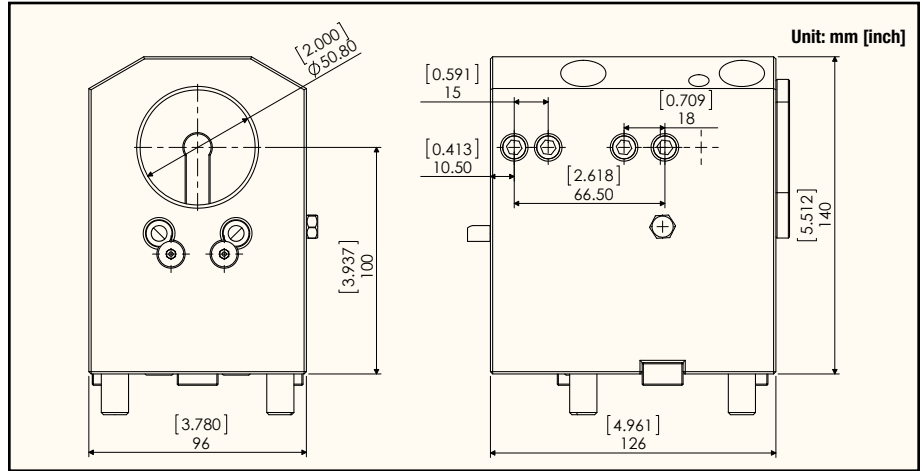


Description	Interface	Output Size
BMT65 1.5" Boring Bar Holder	BMT65	1.1/2"

Note: Max Coolant Pressure 1000 PSI. Must use a minimum of a 20 micron coolant filter to prevent damage to the unit.

2" Boring Bar Holder

Part #: **BMT65-BG20Z-C** (Internal Coolant)

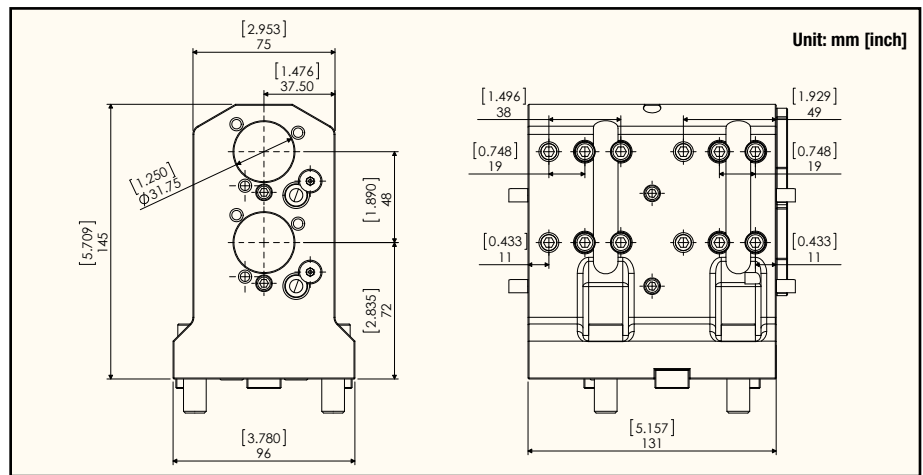


Description	Interface	Output Size
BMT65 2" Boring Bar Holder	BMT65	2"

Note: Max Coolant Pressure 1000 PSI. Must use a minimum of a 20 micron coolant filter to prevent damage to the unit.

1.25" Boring Bar Holder 4 Output (2 Main & 2 Sub)

Part #: **BMT65-BG12Z-MSD-C** (Internal Coolant)

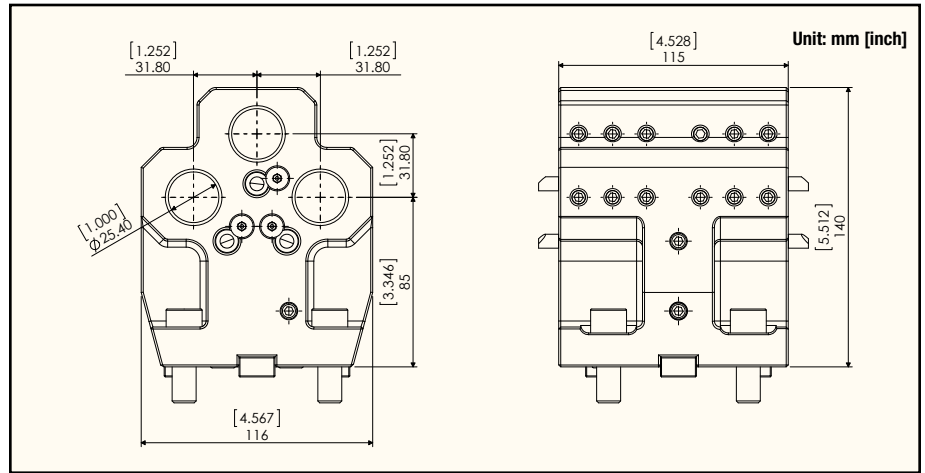
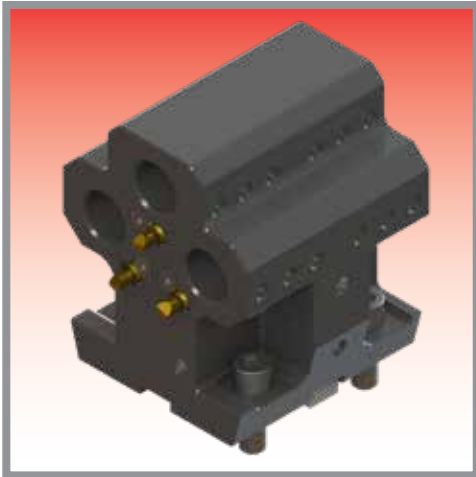


Description	Interface	Output Size
BMT65 1.25" Boring Bar Holder 4 Output (2 Main & 2 Sub)	BMT65	1.25"

Note: Max Coolant Pressure 1000 PSI. Must use a minimum of a 20 micron coolant filter to prevent damage to the unit.

1" Boring Bar Holder 6 Output (3 Main & 3 Sub)

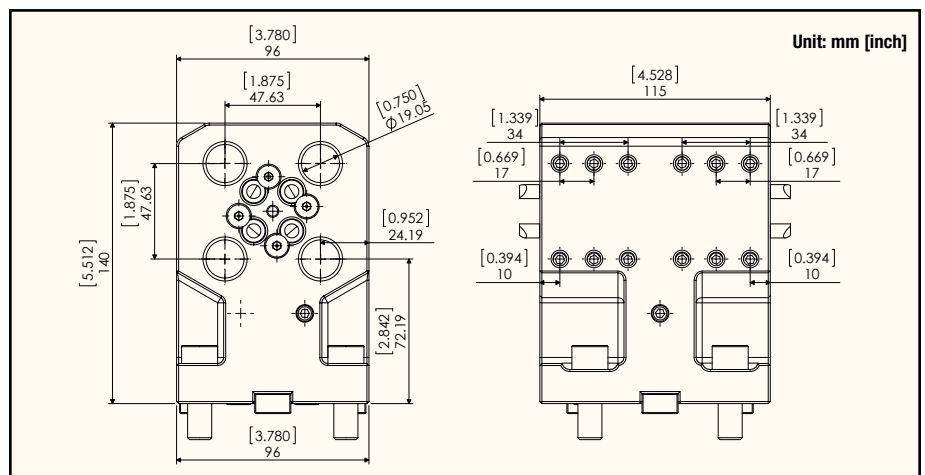
Part #: BMT65-BG10Z-MST



Description	Interface	Output Size
BMT65 1" Boring Bar Holder 6 Output (3 Main & 3 Sub)	BMT65	1"

3/4" Boring Bar Holder 8 Output (4 Main & 4 Sub)

Part #: BMT65-BG75Z-MSQ



Description	Interface	Output Size
BMT65 3/4" Boring Bar Holder 8 Output (4 Main & 4 Sub)	BMT65	3/4"

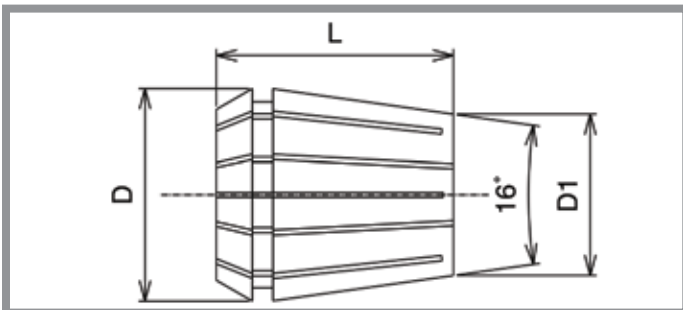
STANDARD (INCH)

SIZE	ER32 PART NUMBER
1/8"	E32-008
5/32"	E32-010
3/16"	E32-012
7/32"	E32-014
1/4"	E32-016
9/32"	E32-018
5/16"	E32-020
11/32"	E32-022
3/8"	E32-024
13/32"	E32-026
7/16"	E32-028
15/32"	E32-030
1/2"	E32-032
17/32"	E32-034
9/16"	E32-036
19/32"	E32-038
5/8"	E32-040
21/32"	E32-042
11/16"	E32-044
23/32"	E32-046
3/4"	E32-048
25/32"	E32-050

STANDARD (METRIC)

SIZE	ER32 PART NUMBER
3.0mm	E32-118
3.5mm	E32-137
4.0mm	E32-157
5.0mm	E32-196
6.0mm	E32-236
7.0mm	E32-275
8.0mm	E32-314
9.0mm	E32-354
10.0mm	E32-393
11.0mm	E32-433
11.5mm	E32-452
12.0mm	E32-472
13.0mm	E32-511
14.0mm	E32-551
15.0mm	E32-590
16.0mm	E32-629
17.0mm	E32-669
18.0mm	E32-708
19.0mm	E32-748
19.5mm	E32-767
20.0mm	E32-787

ER Standard type collet



Style	D	D1	L	Collet Range	Coolant Collet Size Range	Max. Nut Tightening Torque
ER32	33.2mm	24.4mm	40.0mm	2.0 - 20.0mm	10.0 - 20.0mm (1/4" - 25/32")	95 ft.-lbs.

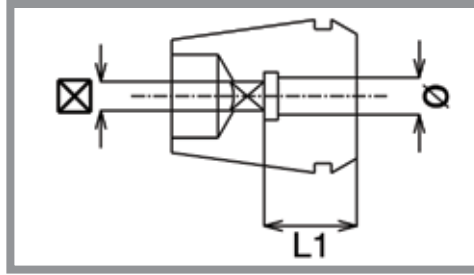
COOLANT (INCH)

SIZE	ER32 PART NUMBER
1/4"	E32-016(C)
17/64"	E32-017(C)
9/32"	E32-018(C)
19/64"	E32-019(C)
5/16"	E32-020(C)
21/64"	E32-021(C)
11/32"	E32-022(C)
23/64"	E32-023(C)
3/8"	E32-024(C)
25/64"	E32-025(C)
13/32"	E32-026(C)
27/64"	E32-027(C)
7/16"	E32-028(C)
29/64"	E32-029(C)
15/32"	E32-030(C)
31/64"	E32-031(C)
1/2"	E32-032(C)
33/64"	E32-033(C)
17/32"	E32-034(C)
35/64"	E32-035(C)
9/16"	E32-036(C)
37/64"	E32-037(C)
19/32"	E32-038(C)
39/64"	E32-039(C)
5/8"	E32-040(C)
41/64"	E32-041(C)
21/32"	E32-042(C)
43/64"	E32-043(C)
11/16"	E32-044(C)
45/64"	E32-045(C)
23/32"	E32-046(C)
47/64"	E32-047(C)
3/4"	E32-048(C)
49/64"	E32-049(C)
25/32"	E32-050(C)

COOLANT (METRIC)

SIZE	ER32 PART NUMBER
10.0mm	E32-393(C)
10.5mm	E32-413(C)
11.0mm	E32-433(C)
11.5mm	E32-452(C)
12.0mm	E32-472(C)
12.5mm	E32-492(C)
13.0mm	E32-511(C)
13.5mm	E32-531(C)
14.0mm	E32-551(C)
14.5mm	E32-570(C)
15.0mm	E32-590(C)
15.5mm	E32-610(C)
16.0mm	E32-629(C)
16.5mm	E32-649(C)
17.0mm	E32-669(C)
17.5mm	E32-688(C)
18.0mm	E32-708(C)
18.5mm	E32-728(C)
19.0mm	E32-748(C)
19.5mm	E32-767(C)
20.0mm	E32-787(C)





ER Tap Collets feature a unique design that incorporates an internal square drive with our popular ER Series collets. The square drive matches the tap square, providing a tight fit for all rigid tapping applications.

TAP COLLETS

PART NUMBER	TAP INCH SIZE	TAP METRIC SIZE	L1	Ø	⊠
ET32-168	#8, 5/32"	M4	15.0mm	0.168	0.131
ET32-194	#10, 3/16"	M4.5, M5	15.0mm	0.194	0.152
ET32-220	#12, 7/32"	-	15.0mm	0.220	0.165
ET32-255	#14, 1/4"	M6, M6.5	20.0mm	0.255	0.191
ET32-318	5/16"	M7, M6.5	20.0mm	0.318	0.238
ET32-323	7/16"	-	20.0mm	0.323	0.242
ET32-367	1/2"	M12, M12.5	25.0mm	0.367	0.275
ET32-381	3/8"	M10	20.0mm	0.381	0.286
ET32-429	9/16"	M14	25.0mm	0.429	0.322
ET32-437	1/8" NPT	-	18.0mm	0.437	0.328
ET32-480	5/8"	M16	25.0mm	0.480	0.360
ET32-542	11/16"	M18	30.0mm	0.542	0.406
ET32-562	1/4" NPT	-	18.0mm	0.562	0.421
ET32-590	3/4"	-	30.0mm	0.590	0.442
ET32-652	13/16"	M20	30.0mm	0.652	0.489

TAP COOLANT COLLETS

PART NUMBER	TAP INCH SIZE	TAP METRIC SIZE	L1	Ø	⊠
ET32-255(C)	#14, 1/4"	M6, M6.5	25.0mm	0.255	0.191
ET32-318(C)	5/16"	M7, M6.5	25.0mm	0.318	0.238
ET32-323(C)	7/16"	-	25.0mm	0.323	0.242
ET32-367(C)	1/2"	M12, M12.5	27.0mm	0.367	0.275
ET32-381(C)	3/8"	M10	25.0mm	0.381	0.286
ET32-429(C)	9/16"	M14	30.0mm	0.429	0.322
ET32-480(C)	5/8"	M16	30.0mm	0.480	0.360
ET32-542(C)	11/16"	M18	35.0mm	0.542	0.406
ET32-590(C)	3/4"	-	35.0mm	0.590	0.442
ET32-652(C)	13/16"	M20	35.0mm	0.652	0.489

Note: Seals up to maximum coolant pressure of 1000 PSI.



SK Collets can be used for all applications, from milling to reaming. Standard collets can be used in coolant thru applications (with coolant back-up screws).



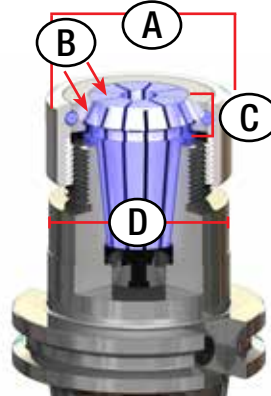
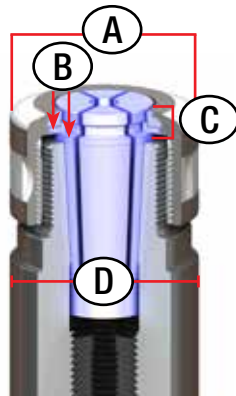
Increased Gripping Power

The smaller the taper angle is, the better concentricity is obtained. Our steep 8° collet seats deeper in the body of the holder, providing twice more clamping force and twice more precision than traditional 16° ER collets.

SK Collet vs. ER Collet

- A.** Slim design allows for clearance
- B.** Force is perpendicular to centerline of toolholder for strong grip
- C.** Deep position creates greater accuracy
- D.** Rigid body is flush

- A.** Wide collets = wide nut design
- B.** Force is angular to centerline of toolholder
- C.** Shallow position creates collet rocking
- D.** Body diameter is smaller than nut compromising rigidity



STANDARD (INCH)

SIZE	SK20 PART#
1/8A	SK20-1/8A
3/16A	SK20-3/16A
1/4A	SK20-1/4A
5/16A	SK20-5/16A
3/8A	SK20-3/8A
7/16A	SK20-7/16A
1/2A	SK20-1/2A
9/16A	SK20-9/16A
5/8A	SK20-5/8A
3/4A	SK20-3/4A

On-size SK Collets (METRIC)*

SIZE	SK20 PART#	SIZE	SK20 PART#
4mm	SK20-4A	10mm	SK20-10A
5mm	SK20-5A	12mm	SK20-12A
6mm	SK20-6A	16mm	SK20-16A
8mm	SK20-8A	20mm	SK20-20A

* On-size collets only collapse .05-.07mm (.002"-.003"). Nominal shank sizes must be used.

SK Collets (METRIC)**

SIZE	SK20 PART#	SIZE	SK20 PART#	SIZE	SK20 PART#
8mm	SK20-8	12mm	SK20-12	18mm	SK20-18
8.5mm	SK20-8.5	13mm	SK20-13	19.5mm	SK20-19.5
9mm	SK20-9	15.5mm	SK20-15.5	20mm	SK20-20
10mm	SK20-10	16mm	SK20-16		

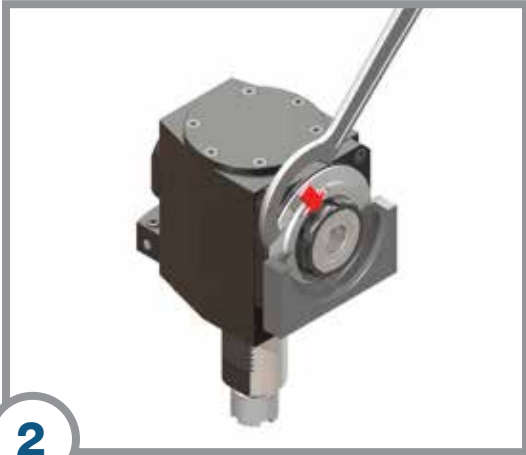
** Metric collets collapse .5mm (.019")

Wrench Instructions



1

Insert setting fixture behind collet nut.



2

After securing the setting fixture in position, apply spanner wrench onto collet nut.



3

While holding the setting wrench, turn the spanner wrench clockwise to tighten.

Service and Support

Lyndex-Nikken is dedicated to providing not only the highest quality of equipment, but also the highest quality of service and customer care. With over 60 years of experience, our service engineers are looking forward to supporting your needs beyond your expectations.

We fully stock all internal components to provide an expedited and cost-effective maintenance program and rebuild package for your live tooling. Managing a maintenance schedule for all your machine tool accessory components can be challenging, so we'll be glad to remind you when the time comes.

Warranty:

1 year warranty for internal components

2 year manufacturer warranty on external body

For any service request or inquiry, please contact our service department: **(847) 367-4800**





The TQW Torque Wrench is very accurate and easy-to-use, guaranteeing maximum accuracy and preventing tool overtightening or breakage.

- **Variable torque adjustable wrench**
- **Robust and durable**
- **Ergonomic grip**
- **Easy to read inch and metric scale**
- **Strong steel shaft is highly corrosion resistant**
- **Easy to set up and operation:**
 - A. Set wrench to desired torque setting**
 - B. Insert attachment**
 - C. Torque down on collet nut until it clicks in place**



A wide selection of attachments are available: ER, SK, TG, Pull Stud, Milling Chuck, CAPTO

Design and Construction



A Lock & Unlock collar securely locks the preset torque and prevents inadvertent adjustment.



Handle is shaped to provide a firm and ergonomic grip.

Collet Number	Part Number	Attachments (Type and Size)			Torque Range		Torque Wrench	
		Description	mm	Inch	lbs	Nm	Part Number	Description
ER8	TQW-ER08	Blank	Special Attachment - Call		4	6	TQW-025	14X18, 25ft.lbs
ER11	TQW-ER11(17)	Hex/OE	17	0.67	11	15		
ER16	TQW-ER16(32)	Hook	32 [+/-5mm]	1.25	40	54	TQW-150	14X18, 150ft.lbs
ER20	TQW-ER20(32)		32 [+/-5mm]	1.25	60	81		
ER25	TQW-ER25(43)		43 [+/-5mm]	1.69	75	102		
ER32	TQW-ER32(50)		50 [+/-5mm]	1.96	100	136		
ER40	TQW-ER40(63)		63 [+/-5mm]	2.48	125	169		
SK6	TQW-SK06(18)	Hex/OE	18	0.71	14	19	TQW-025	14X18, 25ft.lbs
SK10	TQW-SK10(1)		25.4	1.00	33-34	45-46		
SK16	TQW-SK16(43)	Hook	43 [+/-5mm]	1.69	55-62	74-84	TQW-150	14X18, 150ft.lbs
SK25	TQW-SK25(60)		60 [+/-5mm]	2.36	66-73	90-99		
TG75	TQW-TG075(50)	Hook	50 [+/-5mm]	1.96	55	75	TQW-150	14X18, 150ft.lbs
TG100	TQW-TG100(63)		63 [+/-5mm]	2.48	75	102		
TG150	TQW-TG150(82)		82 [+/-5mm]	3.22	100	136		
Pull Stud - 13mm	TQW-PS(13)	Hex/OE	13	0.51	14 ~ 18	19 to 25	TQW-025	14X18, 25ft.lbs
Pull Stud - 3/4" (19mm)	TQW-PS(19)		19	0.75	44 ~ 59	60 to 80		
Pull Stud - 30mm	TQW-PS(30)		30	1.18	147 ~ 185	200 to 250	TQW-150	14X18, 150ft.lbs
Pull Stud - 1/1/4"	TQW-PS(32)		31.75	1.25	147 ~ 185	200 to 250		
Milling Chuck - 3/4"	TQW-C3/4(50)	Hook	50 [+/-5mm]	1.96	19 to 24	26-32	TQW-150	14X18, 150ft.lbs
Milling Chuck - 1"	TQW-C1(60)		60 [+/-5mm]	2.36	27 to 31	36-42		
Milling Chuck - 1.1/4"	TQW-C1.1/4(72)		72 [+/-5mm]	2.83	48 to 59	65-80		
CAPTO C3	TQW-CAPTO3(8)	Hex	8	0.31	26	35	TQW-150	14X18, 150ft.lbs
CAPTO C4	TQW-CAPTO4(10)		10	0.39	37	50		
CAPTO C5	TQW-CAPTO5(12)		12	0.47	52	70		

YOUR NEW WORKHOLDING SOLUTION

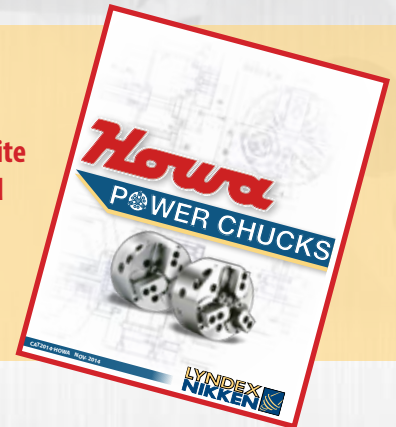
**LYNDEX
NIKKEN**
HYDRAULIC POWER CHUCKS

**HIGH QUALITY
HIGH DURABILITY
HIGH PRECISION**

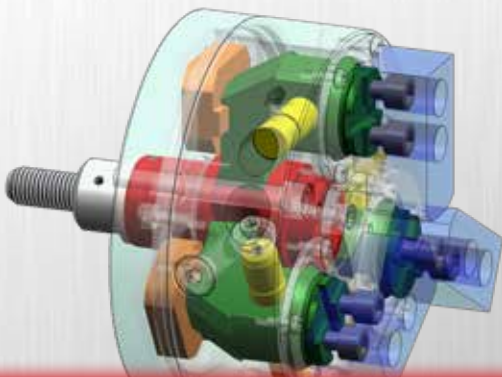


**A wide selection of
2-Jaw, 3-Jaw and
Specialty chucks
designed to handle
any workholding
challenge!**

Visit our website
to download
the catalog!



HYDRAULIC POWER CHUCK FEATURES



- Low maintenance, High performance
- Capable of clamping over workpieces with uneven surfaces and a large range of diameters
- Maintains powerful clamping at high RPM
- Large through hole bores available for bar feeding
- Fully sealed structure reduces frequent greasing and prevents coolant leaks



Phone: (847) 367-4800



Email: sales@lyndexnikken.com



www.lyndexnikken.com

Connect with us on our
social media channels!

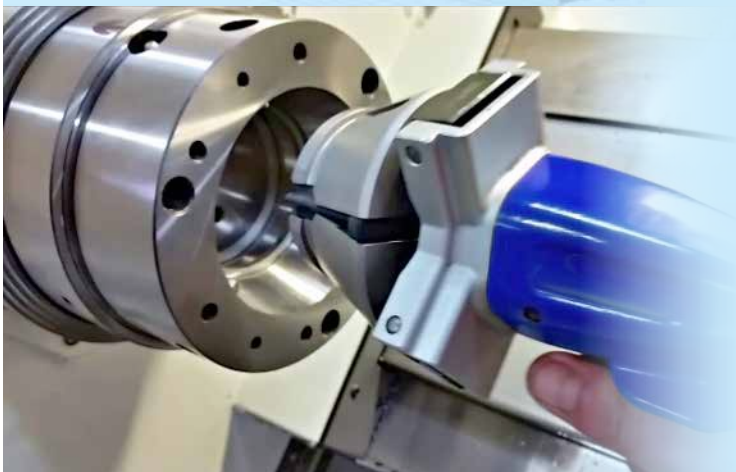


QUICK CHANGE FLEX COLLETS

AVAILABLE NOW!



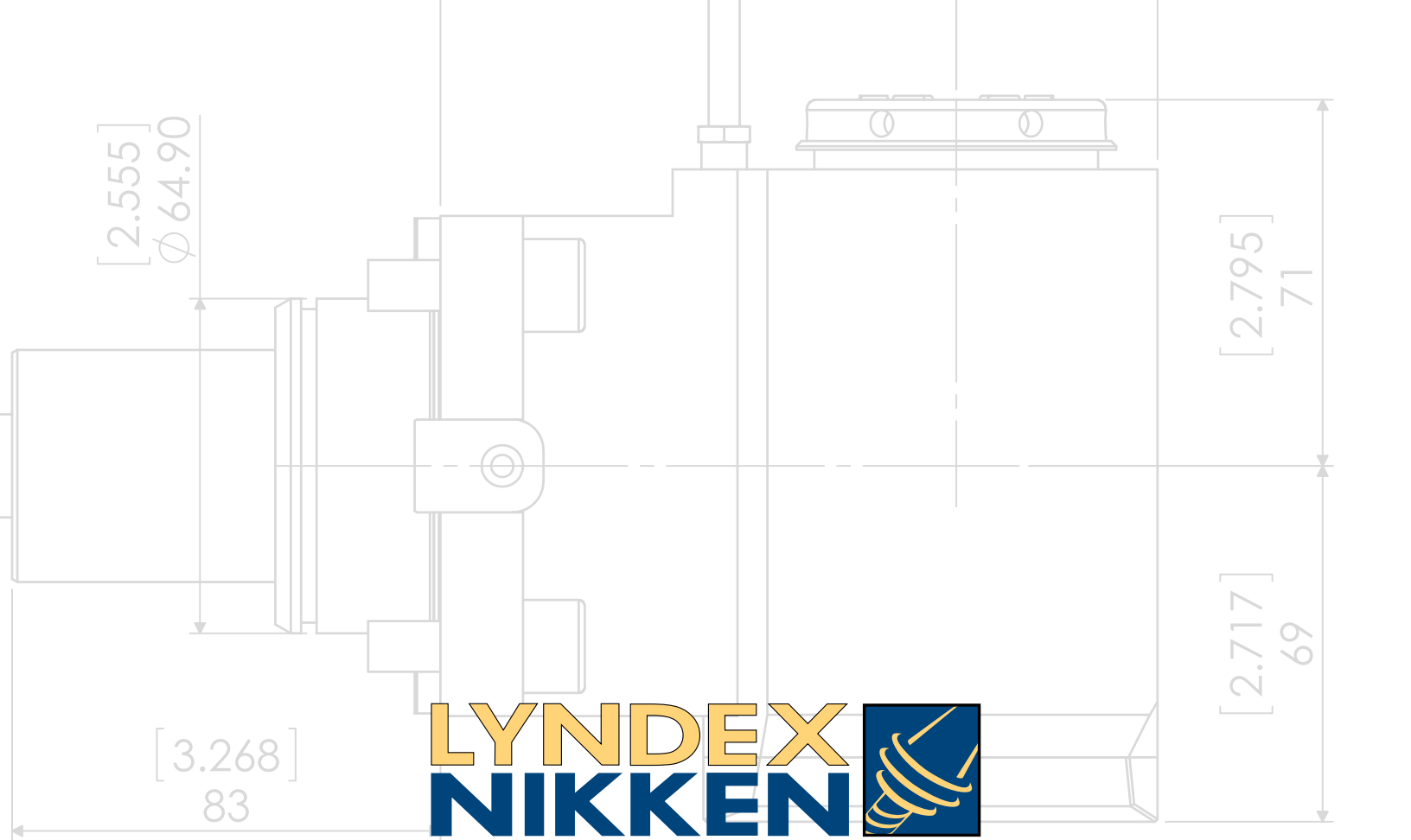
**COLLET CHANGE
IN 10 SECONDS!**



- **Quick set-up time** - Collet can be switched to any size within seconds, not minutes
- **Increased Precision** - Collet accuracy is .0004" or Better
- **Increased Grip Force** - Collet collapses parallel to work piece, not angular
- **Increased Clamping Range** - Quick Change Flex collets allow work pieces to be up to +/- .0156" from nominal diameter

For more information and to download our
QCFC Product Catalog, please visit:
www.lyndexnikken.com/QCFC





LYNDEX
NIKKEN
PRECISION FIRST

www.lyndexnikken.com

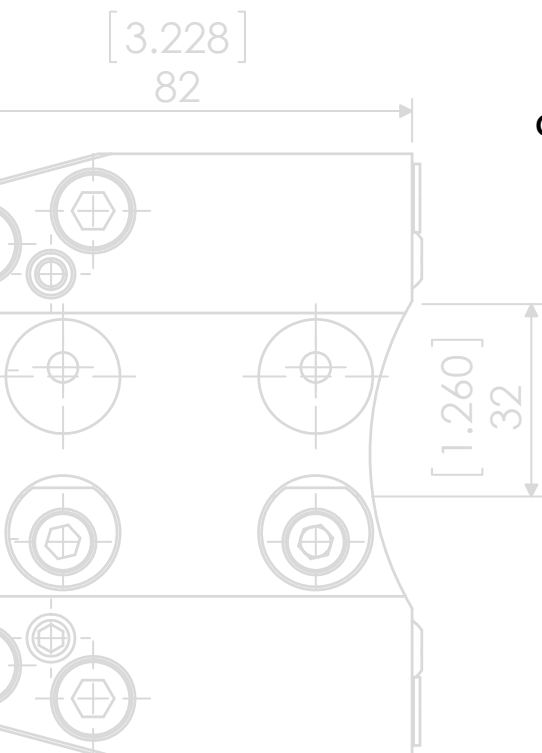
**1468 Armour Boulevard
 Mundelein, IL 60060**

E-mail: sales@lyndexnikken.com

Phone: (847) 367-4800

Fax: (847) 367-4815

[4.898]
124.40



CAT2017-BMT65-LT-HAAS

JULY 2017

